

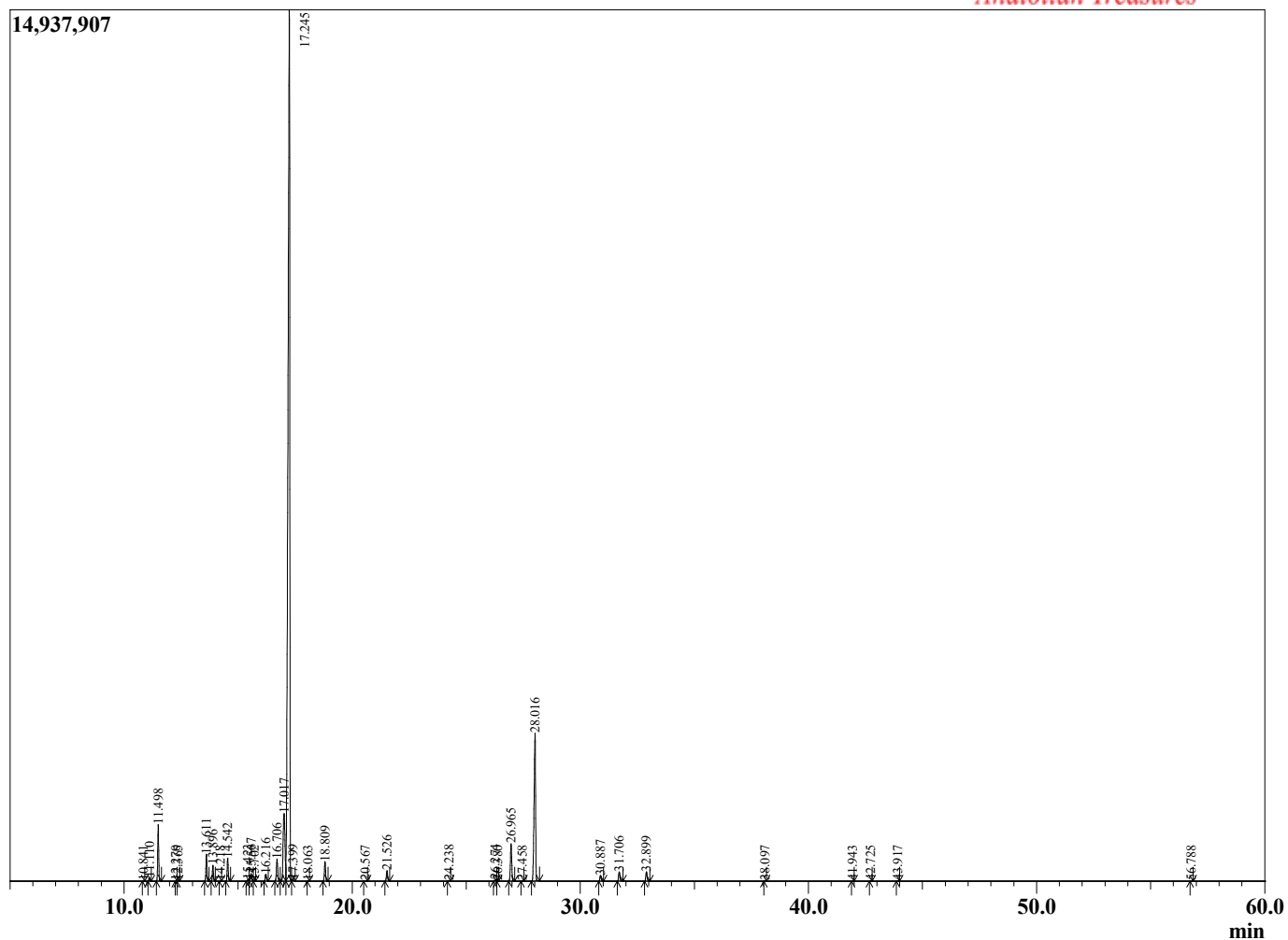
Sample Information

Sample Type : Essential Oil
 Sample Name : Eucalyptus radiata :
 Injection Volume : 0.10

Eucalyptus Narrow Leaf
 Lot# AUC32-CK
 Country: Australia



Chromatogram Eucalyptus radiata



R.Time	Name	Area%
3.701	3-Methylbutanal	0.01
10.841	Hashishene	0.00
11.110	alpha-Thujene	0.14
11.498	alpha-Pinene	2.53
12.270	alpha-Fenchene	0.00
12.365	Camphene	0.02
13.611	Sabinene	1.29
13.896	beta-Pinene	0.76
14.218	Camphene isomer	0.01
14.542	Myrcene	1.13
15.423	Pseudolimonene	0.06
15.567	alpha-Phellandrene	0.40
15.702	delta-3-Carene	0.01
16.216	alpha-Terpinene	0.36
16.706	para-Cymene	1.32
17.017	Limonene	5.74
17.245	1,8-Cineole	70.65
17.399	cis-beta-Ocimene	0.07
18.063	trans-beta-Ocimene	0.01
18.809	gamma-Terpinene	1.04
20.567	Terpinolene	0.02
21.526	Linalool	0.58
24.238	trans-Pinocarveol	0.03
26.274	delta-Terpineol	0.07
26.380	Borneol	0.01
26.965	Terpinen-4-ol	2.22
27.458	trans-Isocarveol	0.01
28.016	alpha-Terpineol	9.99
30.887	Neral	0.33
31.706	Geraniol	0.56
32.899	Geranial	0.57
38.097	alpha-Terpinyl acetate	0.01
41.943	alpha-Gurjunene	0.00
42.725	trans-beta-Caryophyllene	0.01
43.917	Aromadendrene	0.02
56.788	alpha-Eudesmol	0.01
		100.00